



Jenkins Arboretum & Gardens

News ♦ Education & Events ♦ Annual Report

Spring 2018



Spring Has Sprung!

The first signs of spring arrive early at Jenkins Arboretum & Gardens. We delight in the emergence of the ephemeral woodland wildflowers waking up from their dormant slumber. Spring ephemerals display the earliest color that can be seen in the woodland gardens and they are a welcome sight after the long, cold winter months. Over the years, many diverse types of gardens have been developed at Jenkins – woodland gardens, pond gardens, wildflower gardens, moss gardens, bog gardens,

and rhododendron gardens. All the gardens burst into glory in springtime – it is the Arboretum's time to shine. From mid-April through May we celebrate our Spring Bloom Festival. Jenkins is truly the Philadelphia area's premier showcase garden for azaleas, rhododendrons, and wildflowers.

Following the delicate emergence of early spring wildflowers is an explosion of dazzling color in our azalea and rhododendron collections.



Turk's Cap Lily, *Lilium superbum*



Pinkshell Azalea, *Rhododendron vaseyi*



Virginia Bluebells, *Mertensia virginica*

From the Executive Director



Dear Members and Friends of Jenkins,

Jenkins Arboretum & Gardens is comprised of many different kinds of gardens, with a new one soon to be added. A Children's Garden will open this spring near the John J. Willaman Education Center. In addition to bringing young children into a natural environment under a towering tree canopy, one of the goals of the garden

is to encourage whimsical and creative play and to teach children about conservation of the natural world. Using only natural materials found at Jenkins, children of all ages will be able to construct miniature fairy houses, hobbit homes, toad abodes, and forest forts. Organized active children's education programs will also take place in the new garden.

On behalf of the Board, Staff and Volunteers, I wish to thank so many of you for helping to secure the future of the Arboretum & Gardens with your loyal support and the many ways you contribute to our ongoing success. Special thanks also go to so many people who responded to questions on a brief survey. The overwhelming responses were very positive and reassuring and clearly expressed that Jenkins is on the right path. Common responses were "love the tranquility", "native plantings so well labeled", and "please do not change anything."

This Newsletter and Annual Report is filled with interesting news, varied educational programs and highly anticipated events. I suggest you mark your calendars now as we rush into the busy spring season.

Very truly yours,

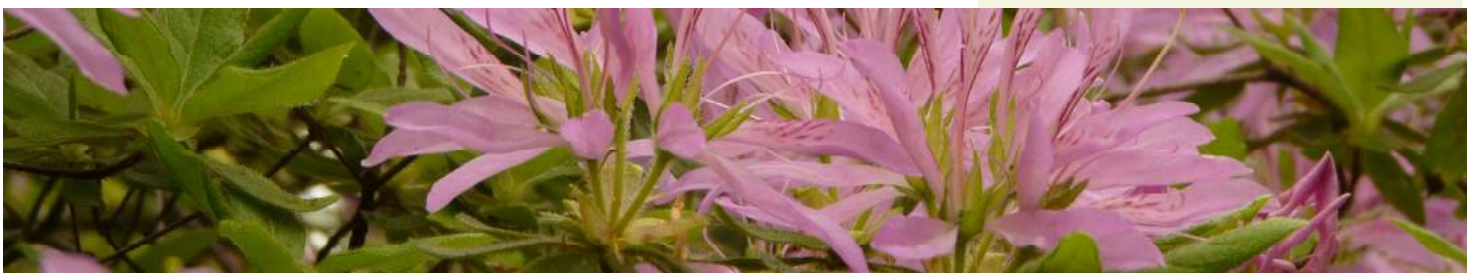
Harold E. Sweetman, Ph.D.
Executive Director

Table of Content

Spring Has Sprung	1
Letter from the Executive Director ...	2
New Board Members	3
Jenkins Arboretum & Gardens	
Board of Directors	4
Staff	4
Volunteers	4
Green Ribbon Native Plants®	5-6
Hitting The Reset Button	7
And The Beat Goes On	8
Golf Cart Tours	9
Children's Garden Spring 2018	10

Event Registration Form	11
New Expressions - Trois Artists ..	12-13
Plant Shop Opening	14
Easter Sunrise Service	14
Native Perennials with Bling	14
The Art of Ikebana	15
Annual Delaware Valley Regional	
Daffodil Show	15
Magic in Spring	16
Beginner Orchid Workshop	16
Nature Printing	17
Pizza in a Pot	17
VFARS Annual Public Plant Sale	16
Spring Field Trip	19
Delaware Valley Iris Society Events ..	20
Spring Glorious Spring	21

Legacy Society	22-23
Membership & Gifts in 2017	24-28
Gift Annuities	28
Forever Jenkins Endowment	
Campaign	29
Annual Report	30
Membership Application Form	31



New Members to the Board of Directors



**Dr. Linda K.
Himmelberger**

Linda, a graduate of Goucher College and the University of Pennsylvania School of Dental Medicine, began practice as a general dentist in Devon following a General Practice Residency at Bryn Mawr Hospital.

Long interested in nature and all things green (no doubt fostered by childhood participation in Girl Scout camping trips in the mountains of Pennsylvania!) She has been enthralled by Jenkins Arboretum & Gardens and the crucial role that it plays in preservation and education for the next generation of nature enthusiasts.

Linda has served, or is serving on a number of boards, including the American Dental Association Foundation, the American Dental Association Board of Trustees, the International College of Dentistry-USA Section Board of Regents, the Pierre Fauchard Academy Board, Goucher College Board of Trustees, and the Emergency Aid of Pennsylvania Foundation. She has been actively involved in the Bryn Mawr Presbyterian Church, and is currently serving on the Worship Committee. In her spare time she loves to travel.

She is a welcome addition to Jenkins' Board of Directors.



Pamela Joy Jensen

Pamela Joy Jensen has been a resident of Wayne, a regular visitor to Jenkins Arboretum & Gardens, and an enthusiastic gardener for most of the past 34 years. After earning a B.S. in chemistry from Muhlenberg College and a Ph.D. in biochemistry from the University of Pennsylvania, she was a Research Professor of Dermatology at the University of Pennsylvania School of Medicine. She began a second career by enrolling in law school at the University of Minnesota, and upon earning a J.D., she served as a law clerk for the Pennsylvania Superior Court and Supreme Court. Now retired, she is an elder at Wayne Presbyterian Church and a member of the board of directors of the Wayne Senior Center. Throughout her career in science and law, she has always been fascinated with birds, insects, snakes, and other wildlife. She views retirement as an opportunity both to learn more about the plants and animals with whom we share this planet as well as to contribute to the efforts to preserve their habitat for future generations. Discovering how we can all be better stewards of our environment by creating suburban habitat filled with native plants and alive with birds and other creatures, Pamela tests her ideas in her own yard. This provides an endless challenge and source of pleasure, which is only heightened by engagement with Jenkins Arboretum & Gardens.

She is delighted to join the Jenkins' Board.



Jenkins Staff & Volunteers

Jenkins Arboretum & Gardens Staff

Harold Sweetman
Executive Director

Janet Bauman
Director of Development

Janice Legg
Arboretum Administrator

Steven Wright
Director of Horticulture
Curator of Plant Collections

Maddison Paule
Head Horticulturist

Tara Vent
Hamilton Educational Fellow

John Cassels
Hamilton Educational Fellow

Nancy Cosmos
Digital Mapping Assistant

Helen Standen
Greenhouse and Nursery Manager

Lisa Boehne Tobias, *Receptionist*

Sharon Torello, *Receptionist*

Connie Vegso, *Receptionist*

Heather Fitzgerald, *Receptionist*

Jenkins Arboretum & Gardens Volunteers

Stacy Antoniadis

Katherine

Bennett

Dee Bilotta

Susan Brutico

Nancy Cosmos

Alice Doering

Heather Fitzgerald

Chris Frederick

Deb Frisby

Judi Garst

Leonard Gottesman

John Otto Haas

Ruth Hathaway

Michele Hawk

Mary Ellen & Tom Heisey

Elaine Hershman

George Hollingshead

Nancy & Rick Holmes

Gretchen Kiernan

Carol Klauss

Cheryl Leibold

Linda Lipschutz

Maria MacWilliams

Linda Mason

Hope Marshall

Jeri Deyo McCue

Charlene Millheim

Frances Pane

Leila Peck

Doris Petty

Tracy Rogusky

Leslie Rush

Laura Shook

Arthur Silverberg

Loretta Spadafora

Helen Standen

Dede Strumpf

Chris Swisher

Mindy Taylor

Jean Thorpe

Fulvio & Milena Trosini

Vicky Todd

Regina Wagner

Bonnie Witmer

Sally Wood



Board of Directors

Perc Moser
President

Edmond Morse
Vice-President

Peter Cordray
Treasurer

Marjorie Epps Kennedy
Secretary

Harold E. Sweetman, Ph.D.
Executive Director

Katherine Bennett

Sharon Harris

Linda K. Himmelberger, D.M.D.

Howard Holden

Rev. Dr. George Hollingshead

Pamela Joy Jensen

Gretchen Kiernan

Susan LeBoutillier

Jack Linvill

Ted Patterson

Angela M. Scully

Cole Vastine

Roger M. Whiteman, Esq.

Sally Wood

Frederick C. Fletcher II, Esq.

Emeritus

Marilyn O. Sifford

Emerita

Margaret H. Wolcott

Emerita

John Otto Haas

Honorary

Newsletter Contributors

Writers:

Dr. Harold Sweetman, Janet Bauman,
Steve Wright

Editors:

Janet Bauman, Janice Legg,
Christine Sweetman

© Copyright 2018,
Jenkins Arboretum & Gardens



2018 Green Ribbon Native Plant® Selections

Southern Magnolia (*Magnolia grandiflora*)

Southern magnolia is a medium-sized, evergreen understory tree native to the southern coastal plain from the Gulf Coast across the top of Florida and up into South Carolina. Though not native to southeastern Pennsylvania, there are several hardy selections that make it possible for us to enjoy this beautiful tree in our own landscape. Listed in order of size, from largest to smallest, some of these selections include 'Edith Bogue', 'Bracken's Brown Beauty', 'Kay Parris', and 'Teddy Bear'.

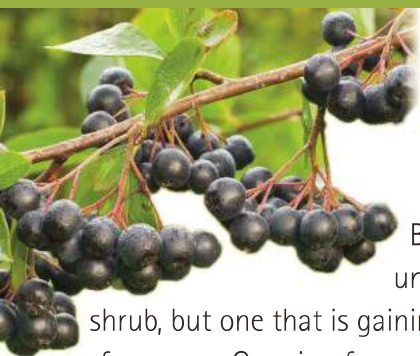
The ornamental qualities of southern magnolia are unlike any other. It has large, thick, dark green leaves with a glossy shine on top and a layer of fuzzy brown hairs below. Its classic, huge white flowers can be 12" or more in diameter and perfume the springtime air with an intoxicating, lemon soap-like fragrance. By fall, the flowers have given way to large, cone-like fruits, containing orange-red berries that dangle on thin filaments and attract songbirds.



Southern Magnolia will grow in full sun to full shade, but will perform best in part sun with moist, rich, well-draining soils. In our climate, it is best to plant in a location where it can be protected from harsh winter winds. Like all magnolias, there are no major pests and it is highly deer resistant, though bucks may rub their antlers on the smooth trunks.

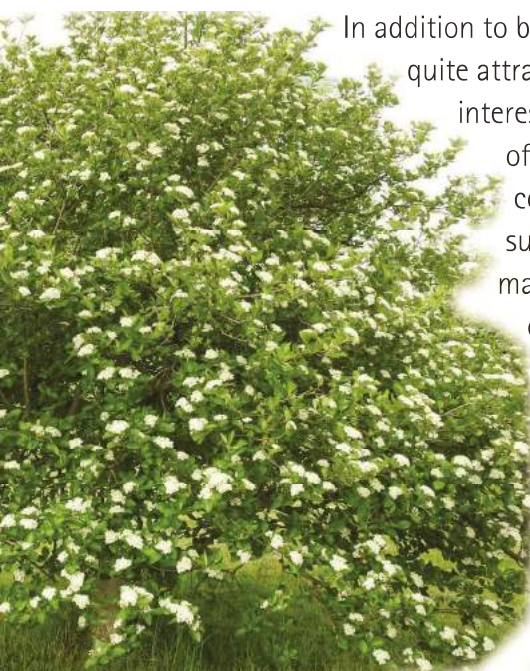


2018 Green Ribbon Native Plant® Selections



Black Chokeberry (*Aronia melanocarpa*)

Black Chokeberry is an underused deciduous native shrub, but one that is gaining in popularity for a number of reasons. Growing from about 2' to about 6' in height, depending on cultivar, it is a very tough plant able to grow in a wide range of garden conditions. It tolerates pollution, salt, drought, insects, diseases, sun, shade, and even deer.



In addition to being tough, it is also quite attractive with all-season interest. In spring, clusters of showy white flowers cover the shrub; in late summer, the flowers make way for clusters of glossy black fruits that dangle from the branches at around the time the leaves have begun transitioning for a fine fall show of red and burgundy; and in winter, after the

leaves have fallen, the fruits persist and attract a variety of overwintering songbirds. These blueberry-sized fruits are also edible for humans and though they are very tart and astringent when raw, they have been processed into a variety of anti-oxidant rich drinks and dietary supplements all around the world.

Black Chokeberry grows with an open, rounded habit with glossy, bright green leaves covering only the top 2/3 of the plant. Knowing this, it is suggested to plant it in masses and in combination with other plants that will fill in the voids near the base of the plants.



Carolina Jessamine (*Gelsemium sempervirens*)

Carolina Jessamine is a 10 to 20-foot-long, twining evergreen vine native to the southeastern United States. As it is a southern species, in southeastern Pennsylvania it is best to use the cold-hardy variety called 'Margarita' and plant it in a location where it will be protected from harsh winter winds.

Gelsemium is among the first plants to bloom every year – a welcome sign that winter is over and the long-awaited spectacle of spring is about to begin. The bright yellow, trumpet-shaped flowers are very attractive and their sweet, candy-like fragrance can be enjoyed from a distance, though you should never pass up an opportunity to get a close-up sniff.

This vine will grow best, and will flower most profusely in moist, well-drained soils and full, bright sun. It is highly deer resistant and looks wonderful grown on a trellis, arbor, pergola, fence or wall and even makes a good porch cover. If desired, prune immediately after flowering to control its height.



Hitting the Reset Button

If you have visited the Arboretum in the past two years, you have surely noticed that many of our azaleas have gotten a haircut. Ok, it's really more like a buzz cut, yet there is a method to our madness. For several years, the Arboretum had been battling a terrible pest called the maple mealybug. Most of us are familiar with mealybugs and other similar pests, like aphids and scales, and know them as mere nuisances that rarely cause major damage on the landscape level. The maple mealybug proved to be an exception. Despite yearly treatments using a range of treatment options, which even included soil injections, these bugs persisted and took a huge toll on our azalea collection. Many of our plants became sickly, leggy, and lacked vigor; the bugs literally sucked the life out of them. So what do you do with an old azalea that has lost its shine? You cut it down. If we are being technical, we call it rejuvenation pruning. Many plants have the ability to re-sprout after being cut down because of the buds that lay dormant under the bark until they get the resources needed to sprout – in this case, light. If you have cut down invasive species such as shrub honeysuckles or burning bushes, you know this all too well. Over the past two seasons, we have been diligent about treating for the scale and have rejuvenated about half of our azalea collection. Plants that were all but dead have made an impressive comeback. A shot of fertilizer in the spring followed by a mild, rainy summer has allowed these plants to fill in with the vigor of a more youthful plant. Though it will take another year or two to regain its former grandeur, our azalea collection is on its way back. We hope you stop by to see the progress.



Emergency cleanup crew wearing many different hats are pictured left to right: John Cassels (Hamilton Fellow), Philip Wagner (Volunteer), Maddison Paule (Head Horticulturist), Steve Wright (Director of Horticulture), Regina Wagner (Volunteer), Nancy Cosmos (Digital Mapping Assistant), Harold Sweetman (Executive Director), and Chris Swisher (Volunteer missing behind the camera).





*The Vanguard Group
Volunteers Day of Service.*

And The Beat Goes On

The Arboretum's efforts to reclaim and restore parts of our Conservation Woodlands has been well documented over the past few years. To say that these tasks have been daunting would be an understatement, yet we continue to forge ahead. After many battles, we are winning the war against invasive species. With many hands, from many places, we have diligently replanted thousands of plants to prevent the reestablishment of invasive species. These restored habitats will play many important roles from storm water mitigation and erosion control, to wildlife habitat and roadside beautification. As fall is the best time for both removing undesirable plants and planting desirable ones, there were four major, volunteer-led restoration accomplishments.

The first group of volunteers joined us on September 9th. As part of their Day of Caring Program, volunteers from Vanguard joined the Arboretum's horticulture staff to continue a project that was started by last year's Vanguard group. Once again, the staff spent a day leading up to the event cutting down about 50 invasive trees and shrubs, mostly shrub honeysuckle, privet, and Norway maple. The volunteer crew then spent the morning chopping

all of the fallen debris which was left on-site to provide erosion control and to eventually increase the organic matter of the soil. The afternoon was spent continuing the planting that was started last year. In total, the group planted about 50 trees, most of which were deer-resistant pawpaws. Other trees included flowering dogwoods, common hackberries, and slippery elms. We look forwarding to rounds three, four, and possibly more, going forward.

The next project was held on September 23rd as Eagle Scout hopeful, Hayden Sudall, led a group of fellow Scouts to remove a 150' section of invasive shrub



*Eagle Scout, Hayden Sudall, front 3rd
from left with Great Valley Troop 106*

honeysuckles and multiflora roses along the Trout Creek streambank. They then replanted the area with Smooth Hydrangea and native Devil's Walking Stick.

Hayden recruited an amazing group of young men and did a great job of leading them through the project, which was finished in only one morning – certainly a record. The Arboretum's staff later went back to the area to plant some clustered mountain mint. In addition to being tremendously valuable ecologically, all three of these species are known to colonize quickly and help prevent streambank erosion.



Aidan Good with Boy Scout Troop 230, Limerick, PA

Just 2 weeks later, another Eagle Scout hopeful, Aidan Good, led a separate group of Scouts to continue restoring the stretch of Conservation Woodlands across Devon State Road from the Arboretum. It is an area that has been in restoration for several years. Now, except for a handful of plants not yet ready to be planted, this area has been fully restored. Aidan and his team not only did a great job in one day, they also came back another day to make sure to finish what they started. Kudos to all of them! It is also worth noting that John Cassels, one of the Arboretum's Hamilton Fellows, has been working on the planting design for this area for the past year and was instrumental in coordinating the planting effort. Finally, continuing what was started well over a year ago, the Arboretum's own Thursday morning volunteers have continued planting the fence line along Devon State Road. Now, the area from the corner of Berwyn Baptist Road all the way to the end of the Arboretum's deer exclusion fence has been cleaned up and replanted. It may have taken 10 mornings and a couple hundred "man hours", but we are nearing the end of another year-long project. Next spring, we will do one more round of planting before we can call it finished. It will be a beautiful roadside floral display.



Golf Cart Tours - New Member Benefit!

Susie and Jack Linvil

Special Behind The Scenes Tours Of Jenkins Arboretum & Gardens

Jenkins now has a four and a six-passenger electric golf cart looking for riders. We are able to offer guided tours by trained docents as a special thank you member benefit. Members of Jenkins and their guests may ride free of charge. Non-members are welcome reserve tours with a suggested voluntary donation. The tours will take you down to the pond and will include "behind the scenes" areas of the Arboretum property, not normally open to the public, such as the gardens around the Jenkins House and the Browning House.

Our goal is to assist people who find the garden topography a challenge so that all people may enjoy the special delights that Jenkins has to offer.

People on golf cart tours will receive much valuable information and education about the gardens and the plants, as well as about Jenkins' mission. This is a wonderful opportunity to become more familiar with the gardens you love and to introduce new friends to the special features of the Arboretum.

Tours scheduled by reservation only by calling 610-647-8870 X154 or by email at webinfo@jenkinsarboretum.org.



Children's Garden Opens Spring 2018

Think! - Hobbit Homes, Toad Abodes, Forest Forts and Fairy Houses

Jenkins Arboretum & Gardens is comprised of many different kinds of gardens with a new one soon to be added. A new Children's Garden will open this spring near the John J. Willaman Education Center. A committee of Board members, Staff and Volunteers have been carefully planning all winter to create a unique space designed to engage children in nature through creative play. The garden space is an ideal scale for children; however, adults are also welcome.

Not a playground in any traditional sense, this garden has a unique ecologic basis and aesthetic. Special active education programs will also take place in the Children's Garden. These programs will be announced in newsletters, education brochures, social media, and email. If you would like email announcements, please become a Jenkins member or make a request to sign up for email at www.jenkinsarboretum.org.

In addition to bringing young children into a natural environment under a towering tree canopy, one of the goals of the garden is to encourage whimsical and creative play. Using all natural materials found at Jenkins,

children of all ages will be able to construct miniature fairy houses, hobbit homes, toad abodes, and forest forts. Building materials may be recycled again and again but never to leave the garden. Otherwise, where would the fairies, toads, hobbits, and other forest creatures live?



Event Registration

Activities & Events Registration Guidelines

Pre-registration is required unless otherwise noted in program descriptions. Please see individual program descriptions for specific guidelines. To register, go to <http://JAGardens.eventbrite.com> or fill out the registration form below and mail to:

Jenkins Arboretum & Gardens
631 Berwyn Baptist Road
Devon, PA 19333

You may also register by fax (610-647-6664) or phone

(610-647-8870 x154) with a credit card.

Phone registration may be done Monday-Friday from 9 am-4 pm. Please inform us of cancellations at least five days before the event. No refund will be issued if cancellation is made less than five days prior to the program start date.

The Arboretum reserves the right to cancel any program if necessary. In the case of cancellation by the Arboretum, all fees will be refunded.

Activities & Events Registration Form

Program	Date	Time	# of Attendees	Cost

☐ Member

☐ Non-member

TOTAL: \$ _____

Opt-in to e-mails for impromptu event notifications!

Sign-up for e-mail communications of upcoming workshops, lectures, and art exhibitions. Email Janice at webinfo@jenkinsarboretum.org to opt-in!

If you unsubscribed from any Jenkins Arboretum & Gardens emails, please consider re-subscribing so you don't miss out on any of our unadvertised "spontaneous" events.



facebook.com/JAGardens



twitter.com/JAGardens



instagram.com/JAGardens

Name _____

Guest(s) _____

Address _____

City _____ State _____ ZIP _____

Phone (required) (____) _____

E-mail _____

Registration confirmation will be by e-mail. If you want confirmation, you must give an email address. Otherwise, please call us at 610-647-8870 to confirm your reservation.

☐ Check enclosed (payable to Jenkins Arboretum & Gardens)

☐ Credit card: ☐ VISA ☐ MasterCard ☐ American Express ☐ Discover

Card No. _____ Expiration _____

Card security code (required) _____ TOTAL \$ _____

Signature _____

New Expressions – Trois Artists Art Exhibition

An Exhibition of the Paintings of Terry Boyle, Ardyth Sobyak, and Julie Spahr

Jenkins Arboretum & Gardens is pleased to invite three gifted artists for a special group exhibition of their paintings. Terry Boyle, Ardyth Sobyak, and Julie Spahr will present new expressions in their artwork in this exhibition. Each of our artists has had a one-woman show here at Jenkins in the past, and we are pleased to welcome them back for this very special show.

John J. Willaman Education Center Gallery
March 23 – May 13 • 9-4 daily

Opening Reception to Meet the Artists:
Friday, March 23, 5 – 8 pm

Terry Boyle (1,2)

Terry Boyle was born and educated in Pennsylvania in and around the Philadelphia area. She was influenced early in life by her grandfather, Norwegian painter Enior Hiortdahl. Later, she attended the Pennsylvania Academy of the Fine Arts. There she studied under notable artists such as John McCoy, Maurice Blackburn, Hobson Pitman, Jack Bookbinder, and Harry Rosen. She has received numerous awards in local and regional shows, and is represented in many private and business collections. She ran a family owned business for over ten years, and raised five children. Terry is active in many community organizations, as well as very active in the arts.



1



2



5

New Expressions – Trois Artists Art Exhibition

Ardyth Sobyak (3,4)

Ardyth Sobyak began painting at the age of 52 after a three-year experience with cancer. Formerly, she was in a very successful career in real estate. After her experience, and while recuperating, a friend invited her to an art class at the Wayne Art Center. She then began re-evaluating her priorities and began painting. She did feel intimidated for quite some time, yet she persevered. She has now won numerous awards and has exhibited her work in numerous juried and invitational exhibitions, in private and corporate collections, and in local galleries and restaurants with much success! Ardyth is an avid gardener and she extends her love of horticulture to her passion for painting flowers, vegetables, and landscapes.

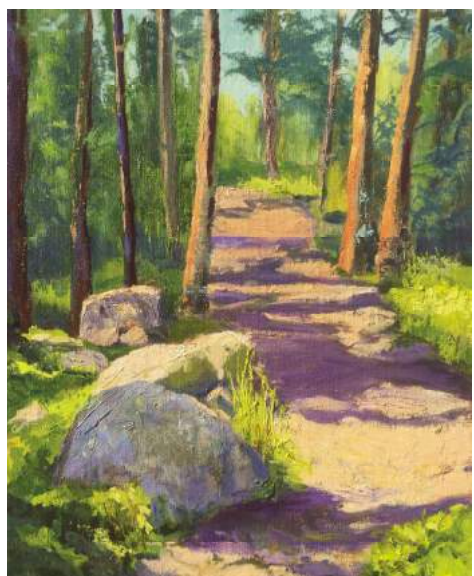
Says Ardyth, "Becoming an artist has introduced me to an entirely new life. I am always meeting people who continually inspire me."



3



4



6

Julie Spahr (5,6)

Julie Spahr considers herself primarily a landscape artist. She prefers the inspiration of painting "en plein aire", whenever possible. Julie is a colorist, energized to paint what she sees in a realistic, yet impressionistic style. Her deep connection with the natural world, in the past and through her art, has led to her immersion in landscape painting. She is continually sharpening her awareness and "seeing" at new levels, striving to portray the light forms and magic before her in her paintings.

Julie's subject matter is inspired primarily from the rolling Pennsylvania countryside and the rocky Maine coastline. She also loves to paint on her travels, especially in Provence and in areas surrounding Florence, Italy.

Educational Programs & Events

The spring line-up features a selection of classes, workshops, and lectures that will help you learn about horticulture, sustainable gardening, and more. There are lots of practical ideas you can take home and implement in your own garden. **Take a look at the offerings and sign up today! Please call or visit our website for a registration form.**

Plant Shop Opening

Thursday, April 12, 9am – 4pm daily



Your garden could look like this someday!

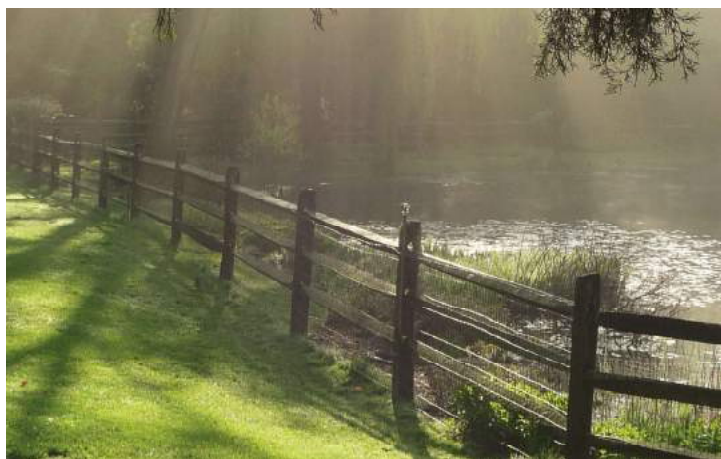
Easter Sunrise Service

Sunday, April 1, 6:30 am

Led by Trinity Presbyterian Church, Berwyn, PA
Trinity Presbyterian welcomes all to celebrate Easter morning, rain or shine, surrounded by the beauty of nature at Jenkins Arboretum & Gardens. Sunrise service will begin at 6:30 am on the hillside above the pond. Bring comfortable shoes and something to sit on. In the event of rain, the service will be indoors, looking out over the tree canopy deck into the gardens. Refreshments will be served in the John J. Willaman Education Center following the service.

Free of charge. All are welcome.

No pre-registration required.



Native Perennials with Bling

Sunday, April 8, 2 pm

*Presented by
Stephanie Cohen*
Less than 30 years ago, our native American plants were looked upon as second class citizens by many American gardeners. The guru of perennials at a PHS talk told an audience "unless the British grew them with their stamp of



Photo by Rob Cardillo

approval they were not considered garden worthy." So Old Joe Pye became Sir Joe Pye and he was invited into the garden. Today it is our natives that are being invited into gardens worldwide. They are all special. However, some have attributes that make them super special for all kinds of reasons.

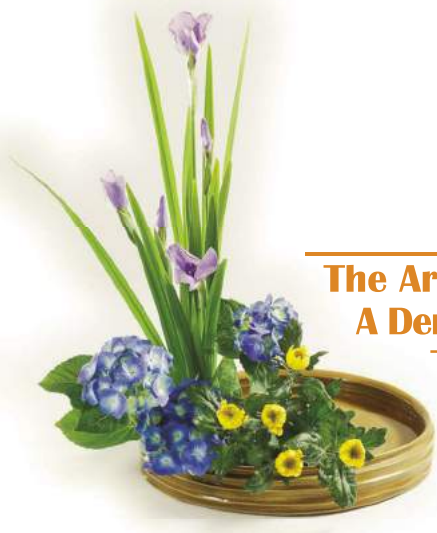
Stephanie will be taking a look at old favorites, new favorites (Stephanie does use cultivars), and some that are underused. Stephanie will try to tell it like she sees it and let the mulch chips fall where they may!!!

Stephanie Cohen has taught herbaceous plants and perennial design at Temple University for over 20 years. She was the Founder and Director of the Landscape Arboretum at Temple University, Ambler. A recipient of many awards, and a sought after lecturer, she has also published several books including *The Perennial Gardener's Design Primer* published by Storey Press. It was their best seller for 2005. Stephanie has been on QVC TV as the "Perennial Diva." In 2017 *The American Gardener* featured her and called her "the grande dame of gardening". She continues to lecture and write and calls herself mature and seasoned, but never old!

\$5 for members, \$10 for non-members.

Pre-registration is encouraged.

Educational Programs & Events



The Art of Ikebana: A Demonstration of Three Schools

Wednesday, April 11,
10 am

Marcia Borel - Sogetsu School, Jose Juico - Ikenobo School, Ann Perry - Ohara School; all members of Ikebana International

Ikebana is one of the traditional art forms of Japan, dating back over 500 years. The word ikebana translated means "living flowers" or "making flowers come alive" as it takes the art of flower arranging to a higher level. It is accomplished by learning and practicing a set of principles that determine stem placement, scale, and choice of container. The result is a stunning and distinct style of floral arrangement.

Join us to learn more about three of the five schools of Ikebana in the Philadelphia area: Ikenobo School, Ohara School and the Sogetsu School.

Free for members; \$10 for non-members.

All are welcome.



Annual Delaware Valley Regional Daffodil Show

Saturday, April 14, 1:30 – 4 pm

Sunday, April 15, 9 am – 4 pm

Presented by the Delaware Valley Daffodil Society

The Annual Delaware Valley Regional Daffodil Show, approved by The American Daffodil Society, will be held on April 14 & April 15, in the Sweetman Lecture Room in the John J. Willaman Education Center. If you love springtime and daffodils, this is an opportunity to see many cultivars available in the marketplace, learn more about the 13 different daffodil divisions, daffodil culture, resistance to pests in the garden, naturalizing, landscape planting, and what constitutes a good garden flower or an excellent show flower. There will be an educational exhibit to further expand your knowledge. Members of DVDS will be available to help answer any questions you may have about growing daffodils. For more information, visit The American Daffodil Society on the web at www.daffodilusa.org.

Free of charge. All are welcome.

No pre-registration required.

Educational Programs & Events



Magic in the Spring Garden: Nature Treasure Hunt for Kids

Sunday, April 15, 2-3:30 pm - Sold Out

*Led by Helen Standen,
Jenkins Greenhouse & Nursery Manager*

Join Helen on a nature exploration of the Arboretum & Gardens as we utilize the tools in our Junior Explorer vests to uncover the magic of the spring garden. Rain or shine! Meet in the lobby. This program is for children ages 4-8 accompanied by an adult.

Sold out event.



Beginner Orchid Workshop: Division, Re-potting, and Sharing

Saturday, April 21, 2 pm

Led by Jenkins Arboretum Staff

Do you have an orchid that is busting out of its pot? Bring it to Jenkins to learn about division and repotting. If you do not have any orchids, but are still interested, come anyway – we will have plenty for you to work on. In fact, help us divide ours and take home one or two for yourself. We will teach you all of the things you need to know to keep your orchids happy and healthy. Space is limited, so please register early.

**Pre-registration is required. \$10 members,
\$15 non-members**



Educational Programs & Events

Nature Printing: Fresh Flowers & Fruits on Paper and Fabric

Sunday, April 22, 1-4 pm

Led by Laura Bethmann,
Artist and Author

In this nature printing workshop we will focus on printing fresh flowers, as well as leaves and fruits, using both inks and paints. No previous experience is necessary to achieve lovely results with this ancient hand printing technique. Experience the beautiful forms and patterns of nature while creating many nature prints and completing one to three projects. All supplies provided. If you have any questions about this workshop contact workshop leader, artist and author Laura Bethmann, laura@laurabethmann.com.

Visit her website: www.laurabethmann.com

\$45 members; \$50 non-members.

Pre-registration required



Pizza in a Pot

Sunday, April 29, 2-3:30 pm

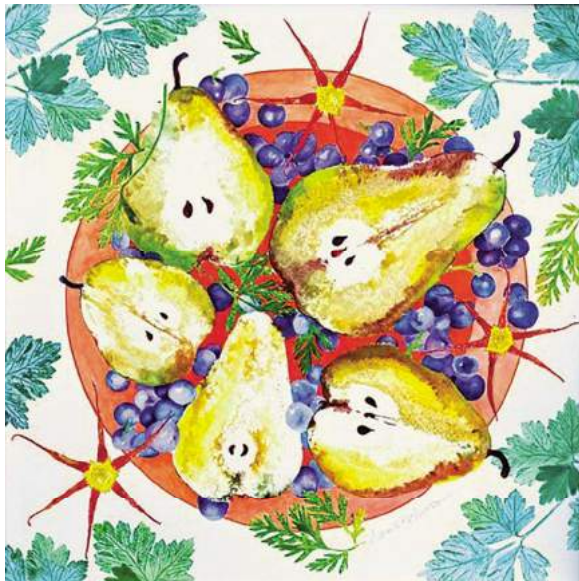
Led by Helen Standen, Greenhouse & Nursery Manager

Children ages 4-10 years will create a vegetable container garden that will provide all the ingredients they need to make a nutritious and delicious pizza (aside from the pepperoni and mozzarella of course!) Tomatoes, peppers and herbs planted in April will be ready to harvest by August. Prefer to spice things up a bit?

Substitute out parsley for cilantro and sweet for hot pepper and you will have a salsa garden instead.

\$5 for members, \$10 for non-members per participant. Pre-registration required.

Class size is limited to 10. An adult must accompany each participant.



Educational Programs & Events



Valley Forge Chapter of the American Rhododendron Society Annual Public Plant Sale

Opening Night Party and Preview Plant Sale:

Friday, May 4, 6-8 pm | To purchase tickets, please contact VFARS www.valleyforgears.org

Public Plant Sale:

Saturday, May 5, 9 am-3 pm | Sunday, May 6, 11 am-3 pm

Rain or Shine • Cash and Checks accepted (no credit cards)

Presented by the Valley Forge Chapter of the American Rhododendron Society



American
Rhododendron Society
VALLEY FORGE CHAPTER

A not-to-be-missed annual event, this is one of the largest public garden plant sales in the area. Offered will be plants ideally suited for area gardens, including rhododendrons, azaleas, and companion plants not readily available elsewhere. Thousands of perennials, native wildflowers, ferns, and slow-growing conifers, as well as donated plants from Society members' gardens will be for sale. We offer great prices, terrific plant selections AND your gardening questions will be answered by our knowledgeable horticultural staff and expert gardeners. Jenkins members may pick up their complimentary "thank you" plants during the sale.

Saturday & Sunday Plant Sale is free of charge. All are welcome.

Opening-Night Party and Preview Plant Sale RSVP

The deadline for party reservations is April 21 for \$5 coupon off plant purchases.

_____ persons at \$30.00 per person: Total: \$ _____

Name: _____ Address: _____

Send check, payable to

Valley Forge Chapter, American Rhododendron Society, 14 Northwoods Rd, Radnor, PA 19087.

Reservations will be used in the drawing of door prizes Friday evening. Sale proceeds benefit horticultural, conservation, and educational efforts, including Jenkins Arboretum & Gardens.



Educational Programs & Events

Spring Field Trip: Bowman's Hill Wildflower Preserve and Hortulus Farm

Thursday, May 10,
Leave at 8:00 am,
return at 4:00 pm

Travel with us to upper Bucks County to visit two of the regions great gardens. The first stop will be Bowman's Hill Wildflower Preserve, the only accredited botanical garden in the country dedicated to native plants. In fact, there are over 700 native plant species growing naturally on the preserve's 134 acres.

Guided by trained naturalists, you will see many of these beauties scattered along 2½ miles of trails in a variety of habitats including mature hardwood forests, a meadow, steep hillsides, a creek, a pond and other wetlands. In addition, you can shop for plants at their Native Plant Nursery.

Hortulus Farm is a 100-acre property featuring twenty-four separate gardens on 30 of its acres, linked by paths, greenswards, and bridges passing over local Fire Creek. In spring, the Hortulus Farm lawns and woodlands are ablaze with over 200,000 daffodils, narcissus, bluebells, native dogwoods, and Delaware Valley white azaleas. The garden includes a lake, birch and pine allées, pool and

fountain gardens, and a splendidly re-conceived kitchen garden.

The historic barns and outbuildings at Hortulus Farm are home to a colorfully



Bowman's Hill



Hortulus Farm

diverse family of farm animals, including dogs, horses, cats, sheep, chickens, ducks, swans, peacocks, and pheasants.

We will be guided by Renny Reynolds and Jack Staub, the Founders of Hortulus Farm. This is a rare opportunity to see the house and museum, and learn about the evolution of the gardens through the eyes of the two individuals who created them. Want more? There is also a nursery, but not just any nursery. This nursery features the rare and unusual in every category, each variety chosen for its outstanding beauty and performance. Their ever-changing stock includes tropicals, standards, espaliers, topiaries, caged and frame-grown specimens, and a superb collection of hard-to-find perennials, shrubs, and annuals, many of which can be viewed in the gardens

\$80 for members, \$95 for non-members

Schedule Outline: Arrive at Bowman's Hill at 9:00

Tour BH from 9:00 – 11:30

Lunch at Hortulus from arrival (noonish) until 12:45

Tour Hortulus 12:45 – 3:00 | Home by 4:00

Pre-registration required. Space is limited to bus capacity. Please register early.

Educational Programs & Events

The Delaware Valley Iris Society Flower Show

Monday, May 28, 12 noon-4 pm

The Delaware Valley Iris Society (DVIS) will be having two events at the Arboretum again this year. There will be a show with both stalks of colorful irises and flower arrangements containing irises on display. This will be on Monday, May 28. All types of irises may be there, yet the majority will be Tall Bearded irises such as the one pictured. DVIS welcomes anyone who is interested to come and exhibit at the show. You need not be a member of either DVIS or Jenkins in order to do so, and there is no charge for entering. You do not have to pre-register in order to exhibit. Anyone interested in exhibiting should plan on arriving at 8:00 AM. The show will be open to the public between 12:00 and 4:00 PM. Photography is encouraged!

There will be knowledgeable members on hand to answer any iris questions that you might have. If you are interested in this event, please check the DVIS website for more details at: www.dvis-ais.org or contact Vince Lewonski at vince@dvis-ais.org
Free of charge. All are welcome.



Proper English Tea

Friday, May 11, 2018 1-3 pm

In the John J. Willaman Education Center

Just in time for Mother's Day weekend, Jenkins Arboretum & Gardens is partnering with A Taste of Britain, Eagle Village, Wayne, to host a Proper English Tea. Invite your friends and family to enjoy delicious tea sandwiches, scones, pastries, teas, and to sip champagne. The gardens will be at the peak of spring bloom. We hope you will plan to take a lovely garden walk after tea.

Cost \$40 per person. Reservation and payment in advance required. Seating limited.

The Delaware Valley Iris Society Sale

Saturday, July 21, 10 am – 1 pm

There will be a sale of all types of iris plants and rhizomes at the Arboretum on Saturday, July 21st, from 10:00 to 1:00. Please come early for best selection!

If you are interested in this event, please check the DVIS website for more details at: www.dvis-ais.org or contact Vince Lewonski at vince@dvis-ais.org



Special Event



Spring, Glorious Spring: Come Celebrate With Us!

Spring Blooms: A Lavish And Leafy Celebration June 2, 2018

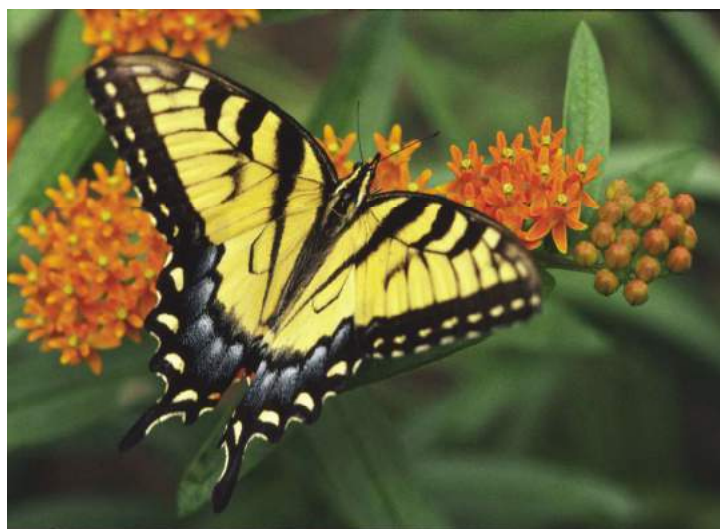
We have much to celebrate. This year our big annual celebration Spring Blooms: A Lavish and Leafy Celebration will be held on Saturday, June 2. All during the winter, people look forward to this festive gathering of friends and loyal supporters of Jenkins. Delicious food and drink is served from 6 – 9 in the John J. Willaman Education Center. The party flows out onto the Ruth W. & A. Morris Williams Tree Canopy Deck overlooking the gardens under

the stars. This year, a special musical performance with Maestro Valentin Radu on the Bösendorfer grand piano accompanied in song by accomplished mezzo soprano Jody Kidwell, will cap off the evening. The ambiance and the music will stay with you long after the party is over. We are celebrating YOU – all of our friends. You are the reason for Spring Blooms: A Lavish and Leafy Celebration. And we are sharing with you the beauty of springtime at Jenkins.

Mark your calendars now and come celebrate spring with us on June 2! **This is a ticketed event.**



At last year's Spring Blooms Celebration, Meg and Steve Shreiner received a beautiful flower arrangement made by Terry Boyle (middle) as special recognition for generous sponsorship from Shreiner Tree Care.





Support Jenkins and Leave a Legacy

The Jenkins Arboretum Legacy Society membership offers each committed donor the opportunity to be recognized and appreciated for philanthropy during his/her lifetime. It is a gift that keeps on giving and generations to come will be the beneficiaries of the vision and generosity of Legacy Society members.

We urge you as members of Jenkins Arboretum & Gardens, who have enjoyed its serenity and beauty over the years, to think about the value of a long term gift to assure the future of the Arboretum. The Jenkins Arboretum Legacy Society offers you the vehicle to make this happen. Please consider joining.

What will your Legacy be?



Founding Members

Mr. H. Lawrence Jenkins*
Kathleen Coll*
Louisa P. Browning*

Endowment Named Funds

Margaret Fawcett Fund
Fund In honor of Barbara and Hans Handschuh
Barbara Edsall Ludwig Fund
Dorrance H. Hamilton Educational Fellowship Fund
Winifred Alcorn Fund
Patricia J. Boehne, Ph.D. Fund
H. Lawrence Jenkins Fund
Kathleen Coll Fund
Wenner and Cynthia Smith Fund
Bill and Jane Denk Fund
Gayla McCluskey and David Humphrey Fund
Fund in memory of Ruth W. Williams

Legacy Members

Cheryl Avery
David Alcorn
Evelyn B. Baker*
Dr. Barbara Bates*
Katherine and Pete Bennett
Edward G. Boehne
Patricia J. Boehne, Ph.D.*
Frank Brouse
Ruth G. Butterfield*
Aldys Davis
Jane Denk* and William Denk*
Christopher Egolf*
Marilyn H. Falls*
Margaret Fawcett*
Nancy and John Fischer
Ann and Charles Fletcher
Janet F. and John Otto Haas
Judith Hamblen
Dorrance H. Hamilton*
Phil* and Karla Herr
Roberta and George Hollingshead
Dorothy E. Hons*
Bitsy Hood* and Louis Hood*
Myrna Jakobowski
Pamela Joy Jensen
Marjorie and Edward Kennedy

Barbara E. Ludwig*
Dr. Evamarie Malsch
Gayla McCluskey and David Humphrey
Charlene and Frank Millheim
Victoria Mowrer
Monika and Tim Panger
Leila and Bob Peck
Libby Pethick*
Mr. and Mrs. John N. Reardon
Noma Ann Roberts
Marilyn O. Sifford and Robert J. Butera
Marta Simons* and Bruce M. Simons
Christine and Robert Smetana
Ellie and Brad Smith
Wenner Smith* and Cynthia Smith*
Christine and Harold Sweetman
Lisa and Andrew Tobias
Milena and Fulvio Trosini
Nancy Tuleikis*
M.J. and Roger Whiteman
Bernard Wiener*
Ruth W. Williams*
Peggy Wolcott
Steve and Mary Wright

*Deceased

The Board of Directors has approved named funds in endowment with a minimum gift of \$25,000. Named funds will be documented in the Annual Report each year. Anyone can contribute any amount to an already established named fund.

Our Mission

The mission of Jenkins Arboretum & Gardens is to preserve natural tranquil woodlands for community enjoyment, to showcase native plants and a world class collection of rhododendrons and azaleas, and to promote environmental horticulture through learning, research and conservation.

Our Vision

The Vision of H. Lawrence Jenkins as defined by the will of H. Lawrence Jenkins, Jenkins Arboretum & Gardens is to be developed as a public park, arboretum and wildlife sanctuary for the use of the public and responsible organizations engaged in the study of arboriculture, horticulture and wildlife, for educational and scientific purposes.



Membership & Gifts

Membership & Gifts in 2017

We extend our sincere gratitude to our donors and a special thank you and recognition to our True Green long-term supporters. **True Green Symbol Key:** ★ = 20 plus years ◆ = 15 plus years ♦ = 10 plus years • = 5 plus years

\$10,000 and over

Connelly Foundation
Gayla McCluskey &
David Humphrey ◆
Mrs. Annabelle P. Irey ★
John C. Bogle &
Eve S. Bogle Charitable Lead Trust
Pine Tree Foundation ◆
Shreiner Tree Care ◆
Virginia Cretella Mars Foundation ◆

\$5,000 - \$9,999

American Rhododendron Society/
Valley Forge Chapter ★
The Chanticleer Foundation
Kelly & Peter Cordray
Mr. & Mrs. Frederick C. Fletcher II,
Esq. ◆
Ms. Helen H. Ford ◆
Ms. Sharon Harris ◆
Karla Herr ★
Mr. & Mrs. John Linvill •
Mr. & Mrs. Percival B. Moser ★
The Pennsylvania Trust Co
The George W. Rentschler
Foundation
Nancy G. King Tuleikis Charitable
Remainder Trust
Anonymous •
Cole & Carla Vastine •
Mrs. Robert Wolcott ★
Mrs. Sally Wood ★

\$2,500 - \$4,999

1919 Investment Counsel, LLC
Katherine & Pete Bennett ◆
Dr. Janice Gordon ◆
Mrs. Nancy G. Harris
The Huston Foundation ◆
Eva Jackson ★
Julie B. Leisenring ★
Tim & Monika Panger ◆
Ms. Betsy Schumacker ★
Spionkop Charitable Trust •
Mr. & Mrs. Roger M.
Whiteman, Esq. ★

\$1,000 - \$2,499

Mrs. Susan Aggarwal
Mr. David Alcorn ★
Mrs. Carolyn R. Aller ◆
Lyn & Steve Baker
Ballinger
Bonnie Marcus & Mike Bennett ★
Brandywine Operating Partnership LP
Charlotte Mason Educational Ctr
Ms. Mary E. Chomitz
Ms. Barbara R. Cobb ◆
Elizabeth A. Correia ★
Nancy Cosmos ◆
Karen & Ed D'Alba ◆
Delaware Valley Iris Society ◆
Mr. Larry DeYoung & Dr. Joyce
DeYoung ◆

Eadeh Enterprises
Angela Scully & George Elser ★
Mr. Daniel Fischer
Nancy & John Fischer •
John Otto & Janet F. Haas ★
Dr. Michele Hawk ◆
Howard Holden •
Reverend & Mrs. George
Hollingshead ◆
James S. Herr Foundation
Janssen Biotech
Ms. Pamela Joy Jensen •
Mr. & Mrs. Edward Kennedy ◆
Mrs. Gretchen Kiernan ◆
Susan LeBoutillier •
Evamarie Malsch ◆
Victoria B. Mars ◆
Mr. & Mrs. Paul Mccray, III •
Charlene & Frank Millheim ★
National Veterinary Associates
Ted & Anne Patterson •
Margaret D. Paul
Philadelphia Botanical Club
Rare Plant Group Garden Club
of America •
Mr. & Mrs. Michael Rhoads ◆
Mary & Buck Scott
Mr. Arthur R. Silverberg •
Ardyth & Frank Sobyak ◆
Dr. Peter Sparks &
Dr. Margaret Holley ◆
Dr. & Mrs. Harold Sweetman ★
Thayer Corporation •
Ms. Lois Veale ◆
Dr. Elizabeth McGee Wood ★
Woodlynde School

\$500 to \$999

Monica Anderson •
Aqua Charitable Trust •
Mr. & Mrs. Pierce Archer ◆
Carol Ashton-Hergenhan ◆
Mrs. Cheryl A. Avery ◆
Mr. & Mrs. Robert R. Bankhead •
Mrs. Dierdre Bilotta •
Mrs. Jean G. Bodine •
Carol Jerdan & Edward Boehne ★
Ms. Rebecca Bradbeer ◆
Mrs. Joan B. Bromley ◆
Karen & Doug Brown ◆
The Bryn Mawr Presbyterian
Church
Marilyn Sifford & Bob Butera ◆
Mr. Robert B. Camp •
Steven M. Castorani
Community Garden Club at Wayne ★
Mr. & Mrs. Robert H. Craven, Jr. ◆
Delaware County Community Fndn
Delaware Valley Daffodil Society ◆
Mr. & Mrs. Luigi DiFilippo ★
Mr. & Mrs. Albert Doering ◆
Ms. Janet Dreher •
Donald & Sally Firth ◆
Four Counties Garden Club ★
The Gardeners ◆

Jim & Kay Gately ◆
Susan Gerrity
Jack & Laura Gregg ◆
HBE Foundation
Mary Ellen & Tom Heisey •
Ms. Nancy Hemberger •
Mr. & Mrs. Steve Henning •
Dr. Linda Himmelberger ◆
Howell Partners LLC •
Humanus Corporation
Mrs. Myrna Jakobowski •
Margaret and David Langfitt
Ms. Susan Lea
LeBeau Landscapes LLC
Leslie Miller & Richard Worley
Foundation
Lincoln Financial Advisors Corp
Donald & Patricia Littlewood •
Janietta & Patrick Lusk •
Steve & Bonnie Lyons •
Jane C. MacElree •
Linda Mc Isaac
Tom & Linda McCarthy ★
Mr. & Mrs. Edmond H. Morse ◆
Ms. Maris Ogg
Mr. & Mrs. Paul W. Olson ◆
Frances Pane ◆
Perfect Setting Catering, Inc
Mr. & Mrs. David Prewitt •
Dr. & Mrs. Robert Priem ◆
Riley Riper Hollin & Colagrecio
Mrs. Noma Ann Roberts ◆
Dr. Philmore Robertson, Jr. ◆
Dr. & Mrs. Norman Rose ★
Dianne & Jeffrey A. Rotwitt
Mr. George Rubin
Margaret Rux
Sylvia Louise Ryland
Mr. & Mrs. William Schwarze ★
Ellie H. Smith ◆
Elizabeth Stevens ◆
Suburban Garden Club
Lisa & Andrew Tobias •
Bonnie & Phil Witmer •
Woodlea Garden Club
Steve & Mary Wright
Dr. George Yu

\$250 - \$499

Mrs. Suzanne Artman
Evelyn B O'Hara & Forest Baker
John & Wanda Beilenson
Karel & Betty F. Bernady ◆
Ms. Julie Blank •
John & Eve Bogle ◆
Marty Brady
Mrs. Virginia C. Brookins
Mrs. Laura L.T. Bullitt
Mr. & Mrs. Michael Burg
Mrs. Jenny Rose Carey ◆
CertainTeed/ Saint-Gobain
Mrs. Marjory Dewitt Cooper ◆
Daughters of the British Empire of PA ★
Mrs. Aldys Davis ★
Delaware Valley Daylily Society

Mr. & Mrs. Don Detwiler •
Miss Debbie Dooling
Mr. & Mrs. Richard Eales •
Mrs. Helen Elkins •
Daniel Levine & Heather Fitzgerald •
Ann & Charlie Fletcher ◆
Ms. Judi Garst •
Glen Valley Garden Club ★
Len Gottesman •
The Greater Phila Chpt of the ARS ◆
Mr. Francis R. Grebe ★
Mrs. Robert Greeney
Mr. & Mrs. Bud Gressman ◆
Mr. & Mrs. Julian Guzman •
The Hardy Plant Society
Dr. Ian Harris
Mr. & Mrs. Paul Hartmann ◆
Lynne Heckler ◆
Sharon Downs & Janet Helms ◆
Dr. & Mrs. Colin Hingley ◆
Heidi & James Hole
Mr. & Mrs. Frederick B. Holmes, Jr. ◆
Ikebana International •
Intact Vascular, Inc.
Amanda Swope Joos
Mr. & Mrs. James J. Kelly ◆
Kelli Kessler
Dawn Kowalchuk •
Dr. Evelyn S. Kritchevsky ◆
Mr. & Mrs. Bob Lawler ◆
Janice Legg ◆
Wendy & Larry Liss •
Main Line Unitarian Church
Mr. & Mrs. Duane S. Malm ★
Mr. & Mrs. Ted Mason ◆
Patrick Grannan & Linda Matrunich ◆
Mrs. Mary McElroy ★
Leslie Miller & Richard Worley
Melody & William Montgomery
Mr. & Mrs. Peter Moscufo •
Multi-cultural Academy Charter
School
Murphy Charitable Foundation
Vijay Narayanan &
Sushma Rajagopalan ◆
James Dobner & Helen Negus ◆
Mr. & Mrs. Lathrop B. Nelson ◆
Mr. & Mrs. Joseph Nigro ◆
Old Eagle Garden Club •
Eleanora Patterson
The Pennsylvania Horticultural
Society •
Mr. & Mrs. Leland Perry •
Mr. F. Laurence Pethick ◆
Mrs. Doris Petty •
Phila Society of Botanical
Illustrators ◆
The Planters
Mr. Hugh Ravenscroft ◆
Mr. & Mrs. Herbert Reichert ◆
Ms. Debbie Hughes Robertson ◆
Cackie Rogers •
Ms. Suzanne Roth •
Ron & Carole Rubley ◆
Mrs. Jane Ruffin ◆

Thank you

Mr. Phillip H. Schearer	◆	Ms. Sharon Brown	•	Ms. Allison Goodwin	•	Marjorie L. & Arthur P. Miller	•
Ms. Lisa M. Schellinger		Thacher & Lloyd Brown	•	Susan Green		Madeline Miller	◆
Mrs. Sarah Schmader		Meredith & Richard Brunel	•	Mr. & Mrs. Martin E. Grossman	•	Mrs. Howard G. Minckler	◆
Kevin Scott		Mr. & Mrs. Henry Bryans	◆	Mr. & Mrs. John M. Guinan	◆	Ellen & Douglas Moeller	•
Ms. Nan Seeburger		Mr. McBee Butcher	◆	Ms. Dalya Guris	•	Ms. Penny Moldofsky	•
Seed & Weed Garden Club	•	Mrs. Joseph Calhoun	◆	Mrs. Caryn Haag	•	Jarl W. & Kathleen P. Mork	◆
Ms. Tracy L. Shickel		Diana & Tim Calligan	◆	Mrs. Margy Hamilton		Martha Morse	◆
Bruce & Laura Shook	◆	Mr. William Campbell	•	Mr. Kenneth R. Hamm	★	Mrs. Chessie Moss	◆
Mr. & Mrs. Sherwood H. Spadafora	★	Mr. & Mrs. Jack Campbell	★	Ronald & Elizabeth Harmon	◆	Mr. Steve Mostardi	•
Mallory Stephenson		Mr. & Mrs. Laurence Carolan	◆	Harold Baxter Foundation		Mr. & Mrs. Gerard P. Mullane	•
Mr. John M. Stevens		Don & Eleanor Carroll	◆	Ms. Linda Fowler Hartnett	•	Frank X. & Rose Mary Murphy	•
Ms. Jill L. Stevens		Mrs. Pat Carson	★	Donnis Headley		Mr. & Mrs. Gary Murphy	•
Mr. & Mrs. David Stitely	•	Lauriston & Valerie Castleman	•	Mrs. Joan Henderson		The Mutual Beneficial Assoc, Inc	
Mr. & Mrs. Donald Strumpf	◆	David & Nancy Charles	◆	Ms. C. Ashton Hergenhan		Harold & Diane Newell	◆
Mr. Chris Swisher		Mrs. Rosemary Chen	◆	Mr. & Mrs. Steve Heumann	◆	Mr. William S. Newlin, Jr.	★
Mr. & Mrs. William Thomsen	◆	Ken & Debbie Chiarello	◆	Pedie Hill	◆	Northeast Native Perennials	
Victoria Todd		Roseann Christian	•	Mrs. Anne Hillegass	•	Mrs. Sally M. Novello	◆
Susan & Steve Townend	•	Ms. Valerie Chuse		Tony & Lynn Hitschler	•	Andy Nusbickel	
Ms. Elizabeth Townsend		Mrs. DeAnn Clancy		Jeanne & Robert Honish	•	Gerald & Kathleen O'Dell	•
Ms. Irene Uzinkas	•	Ed Berg & Deborah Clark	◆	Margery Howe		Offshore Garden Club	
Mr. & Mrs. Richard Veith	★	Mindy Clearfield	•	Mr. & Mrs. Graham Humes		Ms. Brenda J. Oliphant	◆
Dr. & Mrs. Jerry Vernick		Mr. & Mrs. Isaac H. Clothier, IV	◆	Immaculata University		Mr. & Mrs. Robert G. Peck	◆
Vertex Inc.		Ms. Mary B. Coe	◆	Ms. Marsha Irvin		Mrs. Phyllis Pfister	◆
Villanova Garden Club	◆	Mr. & Mrs. William Coffey	★	Mr. & Mrs. David Jackson	•	Mrs. Cynthia W. Pierce	
Mrs. Penelope P. Watkins	◆	Mr. and Mrs. Craig Conover		Mr. & Mrs. Richard Jaffe	◆	Mr. & Mrs. Lucian B. Platt	◆
Wayne Presbyterian Church		Mr. & Mrs. William L. Conrad	◆	Jeptha Abbott Chapter NSDAR		Dr. Francis C. Plucinsky	◆
The Weeders Garden Club	★	Terry & Grace Cooke	•	Mr. Randell Jesup	•	Ms. Jane Pompetti	•
Wheat Landscape Gardening & Design	•	Mr. & Mrs. Gene Cordes	•	Leslie Wright Jones	◆	Raymond & Elizabeth Poppert	◆
Mrs. Penelope P. Wilson	•	Mr. Kevin Cronin		Junior League of Phila. Inc. Garden Club	◆	Mr. & Mrs. John Pritts	◆
Mr. & Mrs. Alan Woodbury	◆	Courtney & Jack Crosby	◆	Michelle Kalman		Mr. & Mrs. Joseph Pyle	◆
Lois & Murph Wysocki		Mr. Marc Davidson	•	Lucy Karlsson		Mr. & Mrs. John N. Reardon	◆
Glenda Yu	•	Dr. Richard Davies	★	Ms. Glenna LaSalle Keene	◆	Elaine & Mark Reber	•
Ms. Alyson Zarro		Robert Deane		Mrs. Catharine Keim	◆	Nicolas & Catherine Renon	
		Ms. Christine DeBonis		Anne Kellett	◆	Mrs. Alex Revell	•
\$100 - \$249		Richard & Cathy Decker	◆	Mrs. Caroline R. Kemmerer	◆	Dr. Olive J. Rich	◆
A.C. Johns & Associates	•	Paula & C. Frederick Delong	•	Ms. Patricia Kerr		Max & Sally Richter	◆
Mr. & Mrs. Theodore C. Aepli	◆	Bonnie Dettore		John O. Senior & Nancy Kimmons	★	Minney & Ted Robb	◆
Dr. Terry Allen		Mr. Vincent DiBella	◆	Mr. Ray Klauss & Mrs. Carol Klauss	•	Mrs. Tracy Rogusky	
Dr. & Mrs. Marvin Andersen	◆	Ms. Marcia Dickerson	◆	Ms. Bernadette Kleinman		Ralph & Mimi Rosnow	
Mr. & Mrs. Rick Anglada		Ms. Amy L. Dinning	◆	Mr. Howard R. Kline	★	Dr. Bryan Ruda & Natalie De Barros	
Mrs. Richard Armstrong		Sharon Steeley & Richard Downes		Mr. & Mrs. Richard Kreamer	◆	Lloyd & Sandra Russow	•
Mrs. Barbara Arning		Jeanette & Nathaniel Duffy		Peter & Mary Kreek	◆	Ms. Pamela Schafer	•
Dr. & Mrs. Dean A. Arvan	◆	Kevin McDowell & Suzanne DuPlantis		Mrs. Margaret Laganelli		Carolyn Schellhorn	•
Dr. Hugo Geerts &		Mr. & Mrs. Jack Edson	◆	Ms. Carol Landi		John Schmidhauser & Marilyn Schneider	◆
Mrs. Michele Asselman	◆	Dr. Barbara Elliot	◆	Lynette Landing		Bruce & Karen Schock	
Maryanne & Paul Atterton		Alan & Ellen Epps	◆	Paul Macdonald & Lucille Larkin	•	Ms. Diane Schueler	•
B Lab		Mrs. Miriam LeB Epps	•	Joyce & David Laubach	◆	Mr. Kurt Schuhl	
Mr. & Mrs. Walter P. Babich	★	Barbara & David Erskine		Ann Ledger		Elizabeth Schumacher	★
Ms. Carolyn Bahl		David & Sabrina Falls	★	Mr. Andrew Leibowitz		Ms. Adrienne Schure	
Mr. Bruce Baker		Doug & Kate Falls	◆	Brian Lemoine		Kathy Fisher & Mordecai Schwartz	•
Mr. Doug Balfour		June Farlam		Mr. & Dr. Stefan Levie	◆	Mrs. Jane Sebold	
Rick Ray & Liz Ball	◆	Foulkeways at Gwynedd		Dr. Ronald Lipkowitz	★	Ms. Mary Selman	◆
John & Julie Bartlett		Ms. Christine Frederick	◆	Patricia Longley	◆	Mrs. Marcia Shearer	◆
Ms. Liza Jane Bernard	•	Dr. & Mrs. Erich Freimuth	★	Mr. & Mrs. John A. Lord	•	Con Shields & Peg Shields	◆
Joe & Joyce Berry		Ruth & Klauss Fuelleborn	◆	Margaret & James MacKenzie		John Wellenbach & Ann Sholly	◆
David Poll, MD & Rebecca Bien		Ms. June Fulton	•	Mr. & Mrs. Thomas E. Mackey	◆	Ms. Edith A. Shooster	
Mr. & Mrs. Don K. Black	•	Mr. & Mrs. John Garaguso	•	Mr. Thomas Maczko, Jr.	◆	The Singley Family	
Barb Blynn		Mr. & Mrs. Harry C. Garber	★	Rosalinda R. Madara		Bill & Cathy Siple	◆
Mrs. Marcha Botje	◆	Paul & Claudia Gard		Sidney Margulies		Mr. & Mrs. Robert J. Smetana	◆
Mr. & Mrs. Brian Bouvier		The Garden Club of Philadelphia	◆	Dr. & Mrs. W. Steven Mark	•	Pat & Brian Smith	
Mrs. Teresa Boyle	◆	Mrs. Jane Gardner		Master Gardeners of Mercer County		Ms. Tina Smith	
Mr. & Mrs. Roger Brace	◆	Mrs. Barbara Geltosky	•	McAndrews Law Offices P.C.		Andy Smith	◆
Mr. & Mrs. Craig Brady	★	Gerrity Agency, Inc.		Mr. & Mrs. Robert McCabe	★	Mr. Ken Snyder	
Mr. & Mrs. William Braun	•	Dr. Frances M. Gill		Ms. Jeannine McCullough		Mr. Al Sommar	•
Mr. & Mrs. James P. Brazel	•	Girl Scout Troop of Eastern PA		Mr. & Mrs. Joseph McFalls	★	Mrs. Rebecca Drury Sorlien	
Dr. Klara & Mr. Terry Britt	•	Troop 4205		Mrs. William McLean		Mrs. Julia D. Spahr	◆
Ms. Joan Brodhead		Stephen Green & Michael Godley		Patricia McCloud		Mr. & Mrs. C. Stewart W. Spahr	◆
Mrs. Maria F. Brooks	•	Mrs. Jane P. Godshalk	•	Pamela P. McMullin	◆	John Stevens & Usha Srinivasan	◆
		Ms. Susan Gold	•				

Membership & Gifts

Claudia & David Steckel	★	Janet Bauman	◆	Mr. & Mrs. Alan Daroff	◆	Marcia Hamilton	
Ms. Alexis Sternhell		Ms. Phyllis Belzak		Mrs. Ruth N. Davis		Mr. & Mrs. Albert Hampson	★
Mr. & Mrs. Matthew Strickler	•	Mr. & Mrs. George R. Bennyhoff	•	Dr. Christine DeBouck	•	Richard Hangen	
Bill Bailey & Melinda Taylor	◆	Ms. Joyce Benson		Deer Run Daylily Gardens	•	Mr. Wick Hannan	
Mr. Kenneth Tenley		Jonathan & Toni Black	★	Florence M. Delaney		Ms. Kristin Hansen	•
Herbert Thal	◆	Hollace & Lesley Blakeman		Daniel Delecki		Lorraine Harper	
Mr. & Mrs. Brian Tierney		Dr. Marion Blank	◆	Mr. Fred Dell Angelo	◆	Ms. Joan Harrison	
Maud Tierney		Nancy Bleakley		Mrs. Lynne d'Entremont		Mrs. Deborah Havrilla	
Robert & Barbara Tiffany	◆	Hazel Bliss		Ms. Anna Louise Detweiler	•	Suzanne & Douglas Hay	
Trinity Presbyterian Church	◆	Reverend Robert K. Bohm		Ms. Mary DiAddezio	•	Cynthia Healy	
Mr. & Mrs. Alden Tucker	◆	Ms. Cindy Bohse		Judith Distel	•	Mr. & Mrs. Peter Heaton	★
Robert Leonetti &		Mrs. Peggy Bolger		Mr. & Mrs. Phil DiTanna	•	Dan & Pam Heering	
Martha Turner, MD	◆	Ms. Valinda Garcia Book		Middy Dorrance	•	Virginia & Steve Hendrickson	•
United Church of Christ		Boy Scout Cub Pack 113		Lee & Bill Drinkwater		Mrs. Ann Hermans	•
at Valley Forge		Susan Bradley	•	Mr. & Mrs. Joseph Ducceschi	•	Mrs. Elaine Hershman	
Trina Vaux		Ms. Susan Brede	•	Carol Dutill	•	Rich & Jo Hess	
Mr. Albert Wachlin		Mrs. Philip A. Bregy		Mrs. Sue Dwyer		Ms. Holly Heyser	
Michael & Susan Wachter	★	Ruth Mooney & James Brennan	•	Andy Earle	•	Mrs. Eleanor Huff &	
Regina Wagner		Ms. Kathy Bright		Mr. John P. Easby, III		Mr. Thomas Hickey	◆
Jonathan & Denise Waite	•	Ms. Jeannette Brockman	•	Mr. Stephen L. Eberly	◆	Hilda & Ros Hicks	
Mrs. Lorraine J. Wallace	•	Mr. Mark Brody		Mary & John Ebersole		Nancy Higgins	•
Minna Walsh & Steve Wood	◆	Jessica Brooks		Mr. & Mrs. John E. Edinger	◆	Mrs. Donna Hilborn	
Mr. LeRoy Walters		Michael & Lois Brooks	•	Mr. David E. Edwards	◆	Jane Hileman	
Liya Wang		Brouse Nursery	★	Mrs. Peggy Egerton	◆	Mr. & Mrs. Ralph Hincken	
Ms. Nan Ward	◆	Dr. Lewis Brown		Robert Friebe & Judith Ellis	•	Mrs. Linda Hoade	•
Frank & Ada Warner	◆	Mr. Robert C. Brown & Iris Fried		Ms. Lynda B. Ellison		Elizabeth Holman	
Ken Butera &		Mr. Robert Bruner		Rudi G. Endres		Mrs. Barbara Holt	◆
Karol Wasylyshyn, Psy.D.	◆	Susan Brutico		Ms. Eleanor Erskine	◆	Carol Hook	
Wayne Woods Garden Club	◆	Mr. & Mrs. William Bryant	★	Ms. M.G. Ewing	•	Ms. Elizabeth Hook	
Shirley Ann Weaver	•	David Rayl & Barbara Bucci		Diana Fearing		Ms. Tracy Horter	
Mr. Richard Webb	•	Mr. & Mrs. Edward H. Buchanan	◆	Mrs. Mary Fickman	•	Nan & Bill Hough	
Ms. JoAnn Weiss		Joe & Louise Buchmann	◆	Alice Fisher		Dr. Susan Howard	
Mrs. Patricia Wendel	•	Victoria Buckley		Ann Fitch		Anne M. Howe	◆
John Wenderoth & Annette Hearing	◆	Mr. & Mrs. Thomas C. Buechle	◆	Mrs. Pearl Fong	◆	Mrs. Ana Hudson	•
Mr. John H. Wenzel	•	Beth Burns		Dodi Fordham	◆	Mr. Jason Hufner	
Ms. Mary Westervelt	◆	John Roxby & Felice Burstein	•	Bebe Forster		Dean & Joan Hurst	◆
Samuel & Ellen Wheeler		Ms. Marybeth Bynon		David & Ellen Freeman		Dr. Ali Hurwitz	•
Ms. Cynthia White		Mr. Salvatore Calabrese		Deb Frisby		Ms. Louise Hutchinson	
Mrs. Elaine Whitman	•	Mr. Steve Campbell	•	Joyce Fuerman		Mr. Edward B. Ingersoll	★
Mr. & Mrs. Drake Williams, Jr.	◆	Mrs. Susan S. Carney	◆	Christine Gaeto		Ms. Margaret Innes	•
Mr. & Mrs. Thomas Williams	◆	Dr. John S. Carson	◆	Charles & Liz Gallagher	◆	Bridget W. Irons	◆
Mrs. Barbara T. Winter	★	Mrs. Louise Carter	★	Diana Gardner		Ed Ruby & Kathleen Jackson	◆
Carol Wolfington	•	Ms. Sarah L. Caspar		Mr. Sylvan Garfinkle	★	Sally Jarvis	•
Ms. Patricia Wood	◆	John & Diana Cassels		Lee Ann Garvey		Maria Angelica Jerez	
Colleen Yoder		Dr. Benjamin Champion		Dr. George F. Garwood	◆	Jean Jordan	
Sherley Young	•	Steven & Carol Ann Cherry	◆	Ms. Marjorie Gavitt		Mr. Jose Juico	•
Mrs. W.E. Zabel, Jr.		Edward Chiou		Ms. Carolyn Gerrish		Carol Kangas	
Ms. Carla J. Zambelli		William Clagett		Mr. & Mrs. Bruce Gilbert	•	Dr. Frederic H. Kauffman	•
Mr. G. Kurt Zeisler	◆	Mrs. Virginia Clark		Mr. Edward Gilhool	◆	Laura Keen	
M. Sinclair Adams Ziesing	•	Ms. Patricia Clark	•	Ms. Mary Gilman		Mrs. Grace Keffer	•
Sandra Crow & David Zopf	◆	Ms. Nicola Clarke		Marilyn & Mike Gilpin	•	Jessica & Brett Keller	•
		Dr. William Brennan &		Betsy Girard	◆	Mr. Will Keller	◆
		Sherry Clearwater	◆	Dr. Susan Gisser	◆	Mr. Peter Kerasavich	
		Ms. Cynthia Cochran		Jeremiah Glass		Mrs. Sally L. Kerns	
Regular		Patsy Cole		Mimi Glennie	•	Dianne Kikta	
Lois Adams	★	Mary Ann Collett	◆	Ms. Margaret Glennon		Mr. Edward Killen	
Mr. & Mrs. John B. Adams	★	William Comfort	•	Diane Goeke		Mrs. Constance Kirker	
Anne Louise Adee		Conlin's Copy Center	◆	Julie & Ryan Golembiewski		Ms. Yvonne M. Kita	
Mr. & Mrs. John C.T. Alexander	◆	Mr. David Conway		Ms. Mary Gormley		Doug Kligman & Sarah Ahmann	◆
Mr. & Mrs. Page Allinson	★	Mr. & Mrs. Terry Cook	◆	Mr. Clelland N. Green		Ms. Janice Knepper	◆
Janet Alwang		Mrs. Marianne Cook	•	Mr. & Mrs. Allen L. Greenough	◆	Dr. & Mrs. Jack Kolff	
Jeffrey & Barbara Andrews	◆	Stephen & Sandra Cooper	◆	Linda Greig		Ms. Donna Kramer	
Elizabeth Andrews		Mr. Charles Crawford		Ms. Patricia Grimes		Mr. Philip Krugler	
Ms. Stacy Antoniadis		Mr. Doug Crompton		Mr. & Mrs. Andrew Grossman	•	Leslie Kruhly	
Mr. & Mrs. Vincent Arena, Sr.	◆	Charles & Marie Crowthers	◆	Mr. Steven Grunwald		Mr. & Mrs. Joseph F. Kuhn	
Hilary Armstrong		Karen & John Cunningham		Mr. Antonio Guerra		Marion Kukula	
Ms. Kristina L. Austlid	◆	Bill & Sandy Curry		Mr. & Mrs. Rick Guertin, Jr.	◆	Ms. Loran Kundra	
Susan Ayres		Peter Dachowski	◆	Meridith Haab		Barbara Anne Lagocki	
Mr. & Mrs. Charles Baker, III	◆	John Dale	•	Mr. Greg Hagen		Mrs. Martha Quay Laird	
Ms. Tony Baker		Dr. & Mrs. James Dannenberg	•	Mr. William F. Hahn	◆	Mr. Raymond Lambert	◆
Larry Bamford	•						
Leslie & Jonathan Bass	•						

Thank you

Jim & Beth Lament		Ms. Susan Mrugal		Mr. Chuck Rueger		Mr. Lindsay Andrew Tobias	•
Mrs. Patricia R. Lander	•	Mr. Michael Mudry	◆	Audree Rueger		Sharon Torello	•
Mr. & Mrs. Richard B. Lander	◆	Mrs. Jill Munder	•	Mr. & Mrs. James E Rush	•	Mrs. Francey Trenham	
Deborah Laverell		Mr. Peter Murphy, IV	◆	Bernadette Rush		Nancy Trexler	◆
Angela Lawton	•	Ms. Jennifer Reger Murphy		Mrs. Leslie D. Rush		Jacqueline & Gordon Trolley	
Louise Ledwith		Marjorie Musil		Ms. Kristin Russo		Milena & Fulvio Trosini	◆
Dr. Dennis P. Leeper	◆	Jorie & Kerwin Nailor	•	Ms. Molly B. Ruzicka		Jeanne Trudel	
Ms. Joanne LeGar		Ms. Lori Naser		Mrs. Vera Newmann Sachs		Mr. Edward Tryon	
Mr. William Lehner		Alan & Rosemary Neary	•	Mr. & Mrs. Kenneth Saler	◆	Ms. Lisa Tull	
Mei-Hsung Lei		Xander Neill		Mr. & Ms. James H. Sanborn	◆	Turks Head Landscape Service	◆
Mrs. Deborah Leibowitz		Ms. Pamela Nelson	★	Nick Santoleri		Mr. John F. Tweddle	
Betsy Leschinsky		Ginny Neumer		Mr. Gerald Satlow	◆	Susanna Uffelman	
Lynne Rubin & Michael LeWitt		Ms. Laurie Nishimura &		Mrs. Donna Schenck		Lee & William Urias	•
Miss Matilka Lieto		Mr. Robert Price	◆	Carol & Frank Schmidt	•	Aabeda Vahora	
Mrs. George J. Lincoln	◆	George & Ann Nista	•	Jean L. Scholz	•	Zahid Vahora	
Mrs. Barbara Linehan		Mr. & Mrs. Brian Noll	•	Mr. Tom Schraudenbach		Martha Van Artsdalen	
Mr. & Mrs. David W. Little		Missy Norcini		Mrs. Julie S. Schwartz	◆	John Vanasek	
Mrs. Linda Litwin	•	Gillian Norris-Szanto &		Lynn Seeburger		Ms. Connie Vegso	
Mrs. Maureen Lok	◆	Jeffrey P. Szanto	◆	Valerie K. Seeds		Dr. & Mrs. R. Lee Vogel	◆
Ms. Eileen Longacre	•	Norristown Garden Club	◆	Robert & Nina Selsor	◆	Ms. Helen Wagner	
Dr. Joan E. Lynaugh	◆	Mrs. Pamela Oakes		Bill & Martie Serrill		Ms. M.J. Wallace	
Dr. Jayne Lytle	•	Mrs. Patricia O'Brien		Jane Shafter		Mr. and Mrs. Ralph Walters	•
Maria MacWilliams & Mark Chiu		Helen T. Ockenden	•	Ms. Phoebe A. Sheftel	•	Mr. & Mrs. Donald Wanderer	◆
Joe & Laura Mager		Octoraro Farm	◆	Steven Shelly, Ph.D.		Gail Warner-Lidondici	
Carole Maher		Mr. Russel Oister		Ms. Mary Shiffer	◆	Joan & Reid Warren	◆
Mr. Karl Malessa	◆	Mr. James Oswald	•	Anna & Mitch Shiles		Moirra Watts	
Mrs. Lois Mamourian	•	Ms. Ceilia Paolantonio		Mr. & Mrs. James R. Sholder	★	Mrs. Barbara Weber	•
Lynn Mander	◆	Amy & Joe Parente	•	Mr. & Mrs. Jack Siler	•	David & Judith Weiner	◆
Mr. & Mrs. Norbert Markert	•	Dr. & Mrs. Uday Patankar	•	Mrs. Ellen Simek	•	Ms. Terry Welford	★
Mr. & Mrs. Alvan Markle, IV	◆	Mrs. Elise Payne	•	Mr. & Mrs. John A. Simkiss, Jr.	◆	Welkinweir	
Joseph & Elizabeth Marko		Ms. Diane Pearson		Ms. Karin Simmat		Mary Ellen Wells	•
Mr. Mark D. Marotta		Mike Pellack		Linda Simmons		Bruce & Alix West	•
Karen Marshall		Dr. & Mrs. Cliff H. Pemberton	◆	Fred Simpson	◆	Mrs. William Wheeler	
Bill & Esperanza Marshall	◆	Frank Pepe		Ms. Anne W. Sims	★	Dr. Leah Whipple	•
Ms. Jean Marshall		Karen & Guillaume Perrin		Mrs. Ann Sinatra	◆	Maureen Wilken	
Mr. & Mrs. William G. Matthews	◆	Rich & Maureen Pomeroy		Jan Sklaroff		Mr. & Mrs. Robert Wingerter	
Mr. & Mrs. Regan C. Matus	◆	Mr. & Mrs. Eugene H. Poppel	◆	Ginny & Randy Smith	◆	Carolyn Winter	
Ms. Suzanne Maurer		Kerstin Potter	•	Ms. Susan Smolens	◆	Mrs. Linda Wisch	
Ms. Elizabeth McAleer	•	Mr. & Mrs. Paul Prestia	◆	Ms. Pamela Smyth	•	Tony & Cathy Witczak	•
Elizabeth & Dennis McAndrews		Mr. Timothy E. Price	•	Mimi Snyder	•	Deborah L. Wolf	
Ms. April McClennon		Mr. Gerald A. Quammen	•	Ms. Theresa Snyder		Ken & Mara Wolfgang	•
Jim & Jeri McCue	•	Ms. Tiffany Quinn		Mr. & Mrs. Jack J. Sosiak	◆	Dr. Audrey V. Womack	◆
Patrick McCullagh		Jerilynn Radcliffe		Jonathan Mossman & Linda Spickler	•	Nancy & Donald Wood	•
Mrs. Joyce A. McCullough	◆	Sally Randolph		Dolores Sprague	•	Mr. & Mrs. Allan Woolford	◆
Ms. Barbara McDonald		Mrs. Pauline Raughley	◆	Dr. & Mrs. Walter Stamper	◆	Kim Wright	•
Mr. & Mrs. Alan McIlvain, Jr.		Marcie Reber		Ms. Ellen M. Steele	★	Brooke & Libby Yeager	
Rich McKenzie		Andrena Reese	•	Mrs. Gloria Steinmeyer	◆	Deborah Yohn	
Ms. Sandra L. McLean	◆	Sabine Rehm	◆	Mrs. JoAnn Stephens		Mrs. Mary Yurchenco	◆
Mr. Gene L. McMillen		W. Todd Reider		Dr. Larry Sternson		Mrs. Angela Zager	
Mr. & Mrs. David B. McMullin	•	Ms. Catherine Renzi	◆	Thomas J. & Janet M. Stevens		Jean G. Zeien	◆
Mrs. Missy McQuiston	•	Ms. Bridget Reuter		Ms. Marian Stevens	◆		
Carol Meinhardt		Delories Richardi		Mr. & Mrs. Graham Stewart	•		
Pamela Merriman		Mr. & Mrs. David Richards		Mr. Walter R. Stochel, Jr.	•		
Mrs. Judy Mileto	•	Mr. Harry Richards	◆	Patty Stormer			
Elaine Milito		Sharon Richardson		Mrs. Paula Struble			
Mrs. Nancy Lee Miller	★	Grace Richter	•	Henderson Supplee III			
Harvey & Pat Miller	•	Mr. & Mrs. Eric Riedel	•	Ms. Carolyn Swatsler	◆		
Mr. & Mrs. Thorley Mills, Jr.	★	Elizabeth Rigg		Mary W. Talbot	•		
Ms. Linda Mills	•	Mr. & Mrs. William Ristey	◆	Texada Landscaping Inc			
Michael Martin Mills	◆	Lucretia Robbins	•	Carol & Turk Thacher			
Ms. Judy Moneta		Mr. & Mrs. John Robinson	•	Jocelyn Thayer	◆		
Dave Montgomery		Mrs. Linda Roccas		Mr. Ronald Thoman	◆		
Diane Montgomery	•	Mr. & Mrs. George Roebas	•	Ms. Maryann Thomas	•		
Ms. Jane Moore		Mr. & Mrs. Gil Rogers		Ms. Barbara Thomas	◆		
Mrs. Anne T. Moore	◆	Ellen L. Rose		Jennifer Thomas			
Page Morahan	•	Ms. Barbara Rosenberg		Mr. & Mrs. Thomas F. Thomas, Jr.	•		
Mr. Bill Morehouse		Ms. Dyann Roth		Renee Thomson-Hohl			
Michelle F. Moreschi		Douglas & Rebekkah Rotwitt		Mr. & Mrs. Roger Thorne			
Mrs. Donna Morris	◆	Mr. & Mrs. Paul Rowe	◆	Jean Thorpe	•		
Mr. Chris Moyer	◆	Mrs. Karen Rubert		Mr. & Mrs. James Tinneny	◆		

Matching Companies

The Benevity Community Impact Fund
ExxonMobil Foundation
Fidelity Charitable Gift Fund
General Electric Foundation
Johnson & Johnson Family of Companies
The Mennonite Foundation, Inc.
The Merck Foundation
Pfizer Foundation Matching Gift Program
Schwab Charitable Fund
TransUnion
Vanguard Charitable Endowment Program
The Vanguard Group Foundation
Voya Foundation
Your Cause, LLC

Membership & Gifts

Honorary Gifts

Katherine Bennett
Peter Cordray
Perc Moser
Diana Calligan
Alice Doering
Joan Ellis
Heather Fitzgerald
Claudia Gard
Dr. Michele Hawk
Mary Ellen & Tom Heisey
The Kownacki Family
Lois Mamourian
Jane Ruffin
Harold Sweetman
Robyn Treinish
Roger Whiteman
Kurt Zeisler & Miriam Baurers

Memorial Gifts

Anne Bahl
Stephanie Walsh Beilman
June S. Conking
Maurice & Lillian Distel
Rober & Marilyn Falls
Margaret Fawcett
H. Phillips Jesup
Matilda Jordan
Chester Kukula
Jenna Laubach
Helene Moscufo
Mary Zartman
Wendy Paul
John Stevens
Zoe Tenley

In Kind

Susanna Baum
Karen & Doug Brown
The Chanticleer Foundation
George Elser
Walter Fisher
Holly Heyser
JoAnne Johns
Julie Leisenring
Edmund Morse
James Moyer
Frances Pane
Shreiner Tree Care
Theresa Snyder
Sally Wood

Gift Annuities At Jenkins Arboretum & Gardens

Please join us on Thursday, April 12 at 7pm
for a special presentation on ways of giving.

Creative and Smart Gifts:

Learn about tax smart ways to support the charities you love AND provide income to you for life. Jenkins has partnered for many years with Everence, the Mennonite Foundation, to help establish annuities for our members. Come join us to learn more! Randy Nyce, Stewardship Consultant for Everence, the Mennonite Foundation, will cover gift annuities, gifts of appreciated assets, and strategies related to the new tax law changes. He will also cover gifts through the will.



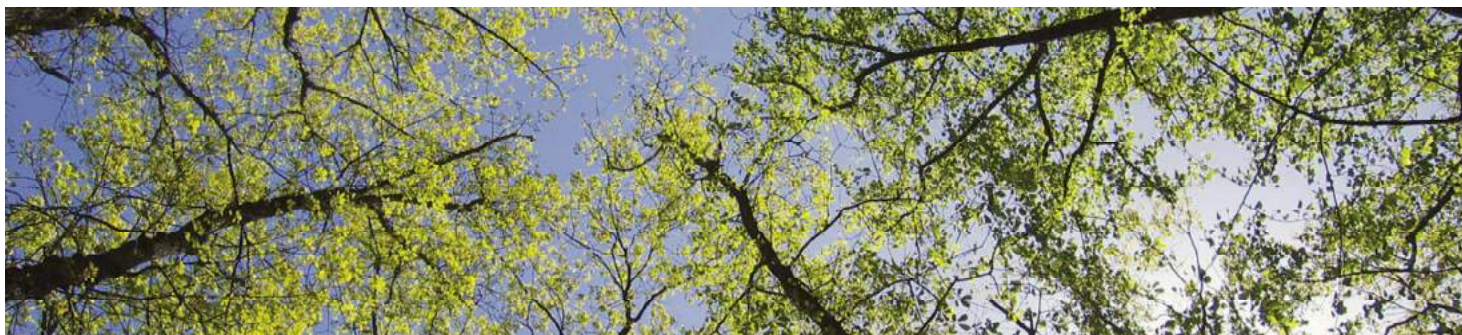
Creeping Phlox, *Phlox stolonifera*
'Home Fires'



Trumpet Honeysuckle, *Lonicera sempervirens*
'Magnifica'



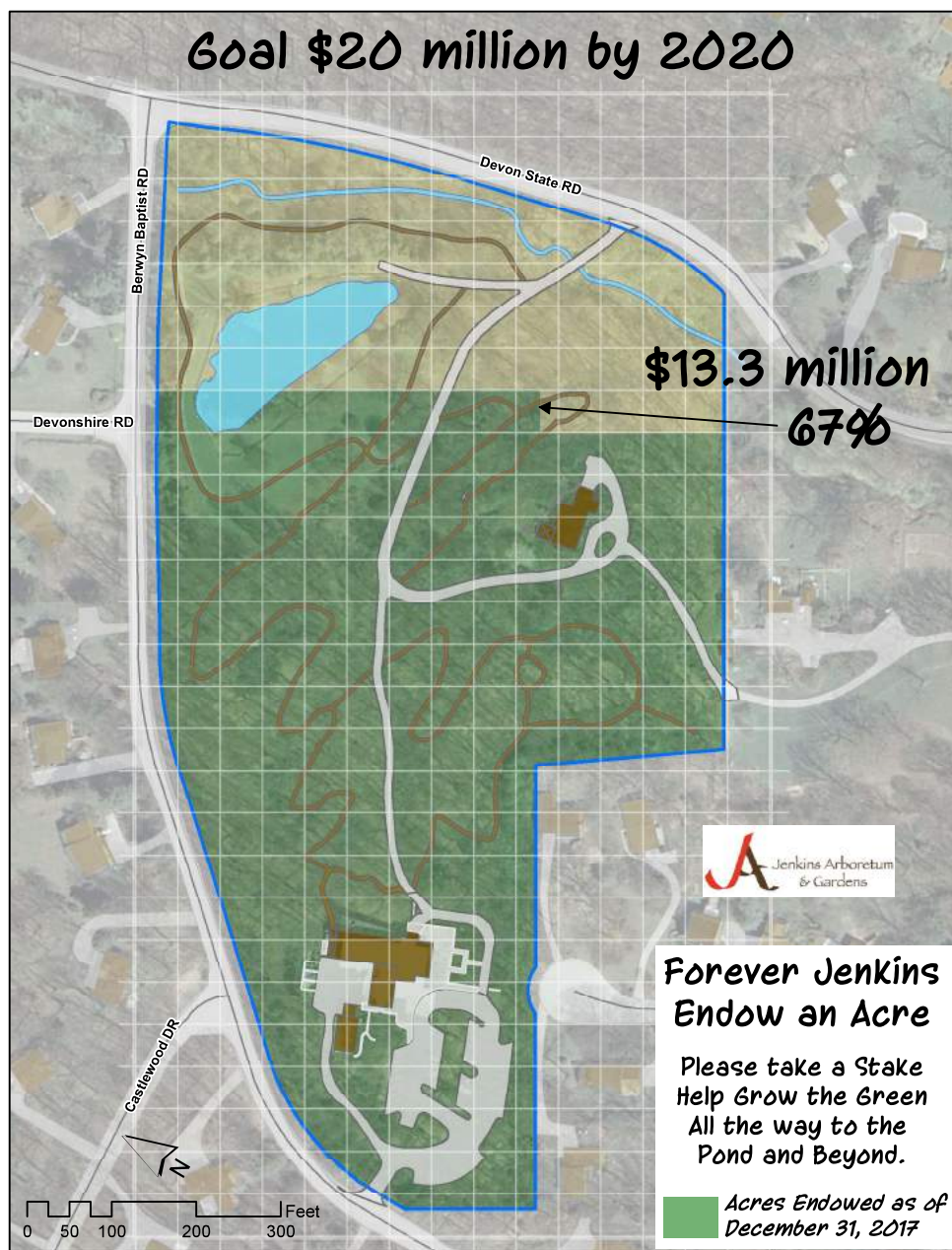
Forever Jenkins



Forever Jenkins Endowment Campaign – Endow An Acre The Green Is Growing!

The green is growing. The map shows just how far we have come in 2017! Please consider a gift to the Forever Jenkins Campaign for Endowment – Endow An Acre. We need your help to preserve the past and help secure the future of our beautiful Arboretum & Gardens. Your support will mean a great deal to very many people, both now and in the future. Securing the future of Jenkins is our top priority for 2018. We hope you will be a part of it. Help us reach the goal of \$20 million by 2020!

A gift or pledge now would be wonderful as we strive to complete our campaign goal by 2020. However, recognizing this may not be possible at this time, we ask if you might consider a planned gift by including Jenkins Arboretum & Gardens in your estate planning.



"One generation plants the trees.
The next generation sits in the shade."

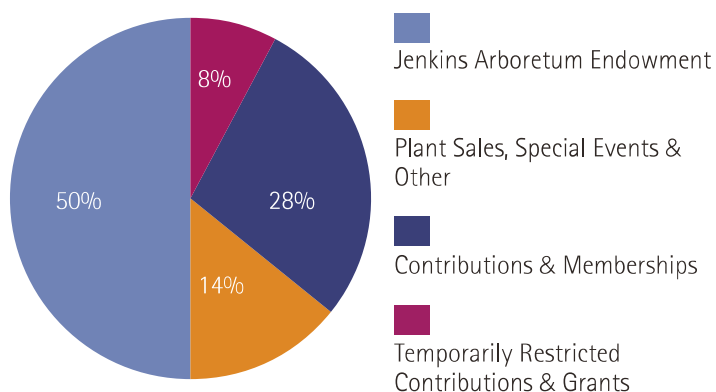
—Anonymous

Annual Report

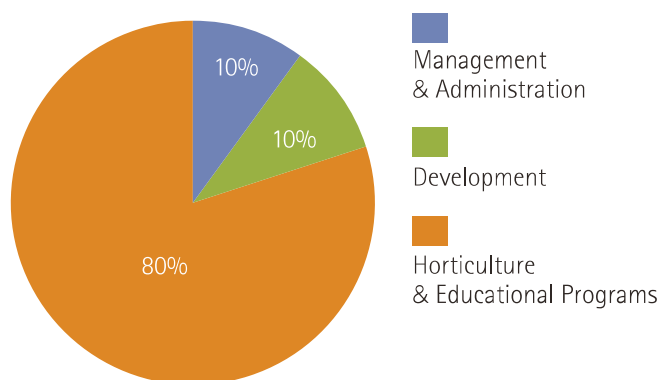
2017 Annual Report: Statement of Financial Position

ASSETS	2017	2016
Current Assets:		
Cash and Cash equivalents	134,746	147,906
Contributions receivable	98,150	53,730
Investments	13,604,970	11,909,294
Property, furniture and equipment	6,130,394	6,276,210
Total Assets	19,968,260	18,387,140
LIABILITIES		
Accounts payable	3,544	3,743
Accrued payroll and payroll taxes	4,368	4,738
Loan payable	36,124	48,248
Total Liabilities	44,036	56,729
NET ASSETS		
Unrestricted	6,581,919	5,265,829
Unrestricted-Board designated	240,154	124,256
Temporarily restricted	75,732	101,137
Permanently restricted	13,026,419	12,839,289
TOTAL NET ASSETS	19,924,224	18,330,511
TOTAL LIABILITIES AND NET ASSETS	19,968,260	18,387,240

Sources of Operating Funds	Amount
Jenkins Arboretum Endowment	\$500,016
Plant Sales, Special Events & Other	\$136,371
Contributions & Memberships	\$280,031
Temporarily Restricted Contributions & Grants	\$74,543
	\$990,961



Use of Operating Funds	Amount
Management & Administration	\$116,805
Development	\$105,877
Horticulture & Educational Programs	\$895,027
	\$1,117,709



Become a Member of Jenkins Arboretum & Gardens

Thank you for your interest and support. We hope to make a difference in your life and our community!

Your support provides:

- Continued free admission to all visitors 365 days a year.
- Protection and preservation of native woodlands and an impressive collection of rhododendrons and azaleas.
- A unique sanctuary for the community to enjoy quiet walks while expanding knowledge and appreciation of horticulture and nature.
- Educational workshops to promote practical horticulture and environmental stewardship at a free or reduced cost to members.
- Newsletters with articles of note about plants, art events, classes, and activities offered at the Arboretum.



Help conserve the botanical garden and woodlands you love while achieving your financial objectives. Giving options include funding your gift with cash, stock, or real estate, making a bequest through the Jenkins Legacy Society, or giving a gift annuity through our Planned Giving Program.

To learn more about your options, please call 610-647-8870 x152 or email legacy@jenkinsarboretum.org.



Membership level:

- | | |
|--|---|
| <input type="checkbox"/> Renewal | <input type="checkbox"/> New Member |
| <input type="checkbox"/> Circle of Friends (\$1,000+) | <input type="checkbox"/> Sustaining (\$500) |
| <input type="checkbox"/> Patron (\$250) | <input type="checkbox"/> Donor (\$100) |
| <input type="checkbox"/> Regular (\$50) | |
| <input type="checkbox"/> I would like to make an additional gift of \$_____ to the Arboretum | |

Name(s)/Organization _____
(as you wish to appear in publications)

Address _____

City _____ State _____ ZIP _____

Phone (required) (_____) _____

E-mail (appreciated) _____

☐ Check enclosed (payable to Jenkins Arboretum & Gardens)

☐ Credit card: ☐ VISA ☐ MasterCard ☐ American Express ☐ Discover

Card No. _____ Expiration _____

Card security code (required) _____ TOTAL \$ _____

Signature _____

☐ My company's matching gift form is enclosed.

☐ I would like to remain anonymous.

☐ I would like to make a tribute gift in honor/memory of:

Address for acknowledgment: _____

For more information please contact us: jenkinsarboretum.org • webinfo@jenkinsarboretum.org • 610-647-8870

The Arboretum has been recognized by the IRS as a 501(c)3 organization and contributions are deductible as provided by law. The official registration and financial information of Jenkins Arboretum may be obtained from the Pennsylvania Department of State by calling toll free in PA 800-732-0999. Registration does not imply endorsement.

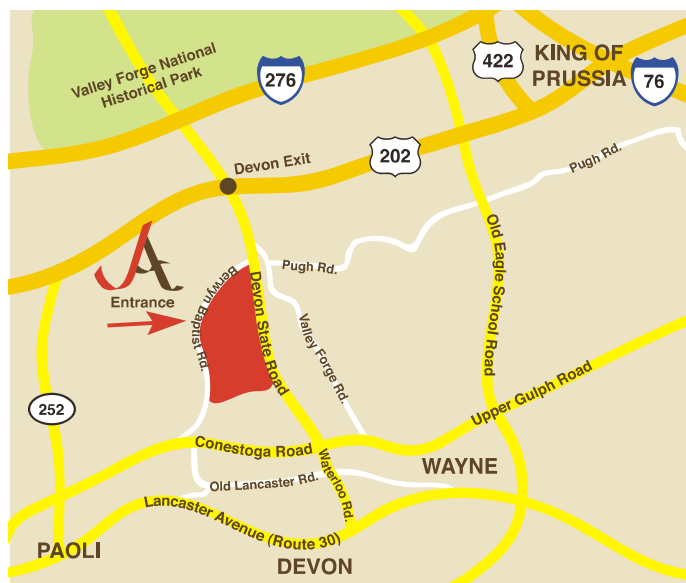


631 Berwyn Baptist Road • Devon, PA 19333
610-647-8870 • www.jenkinsarboretum.org

Nonprofit organization
U.S. Postage

PAID

Southeastern, PA
Permit No. 4021



*Jenkins Arboretum & Gardens is open daily from 8 a.m. to sunset,
7 days a week and 365 days a year. Admission is free.
John J. Willaman Education Center: 9 am-4 pm, daily.*

Save the Date!

Join us on June 2 for our annual Spring Blooms party!
Keep an eye on your mailbox for the invitation.

Thank you to our sponsors

AQUA	Carol & Ray Klauss
Katherine & Pete Bennett	Susan LeBoutillier
Edward Boehne & Carol Jerdan	Julie Leisenring
Carole Haas Gravagno	Perc & Sally Moser
Sharon Harris	Monika Panger 1919 Investment Counsel
Karla Herr	Cackie Rogers
Dr. Linda K. Himmelberger	Steve Shreiner Shreiner Tree Care
Annabelle Irey	Ellie & Brad Smith
Pamela Joy Jensen	Harold & Christine Sweetman
Marjorie & Edward Kennedy	Bonnie & Phil Witmer

Sponsors as of March 12, 2018.

Please contact us at janet@jenkinsarboretum.org
or 610-647-8870 if you are interested in becoming
a Spring Blooms sponsor.

